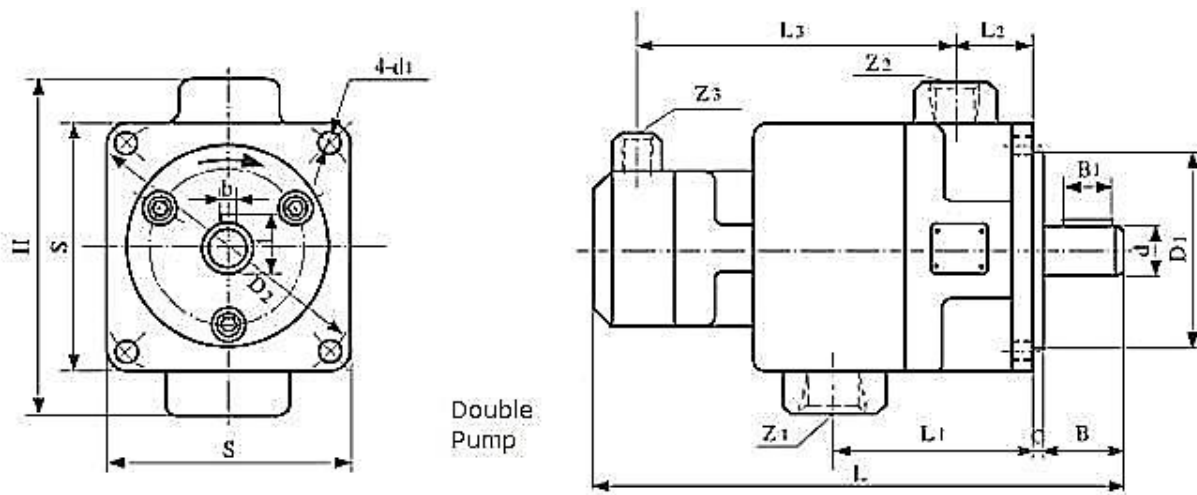


Single Pump



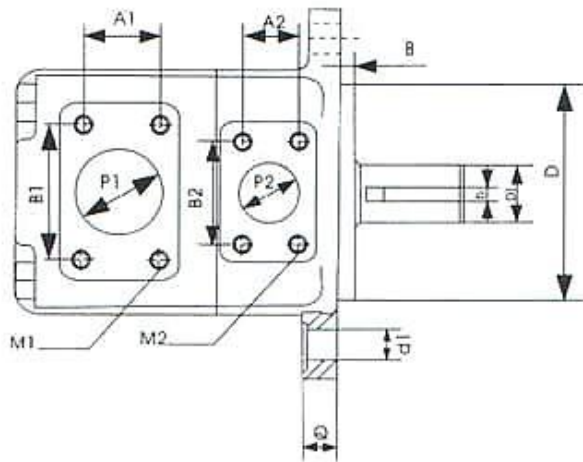
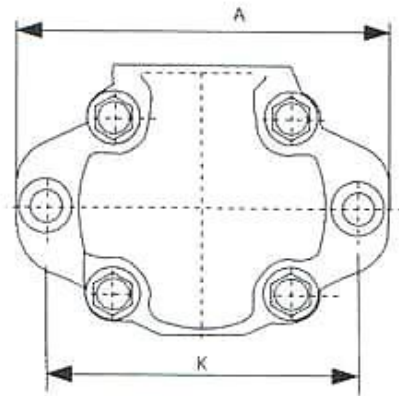
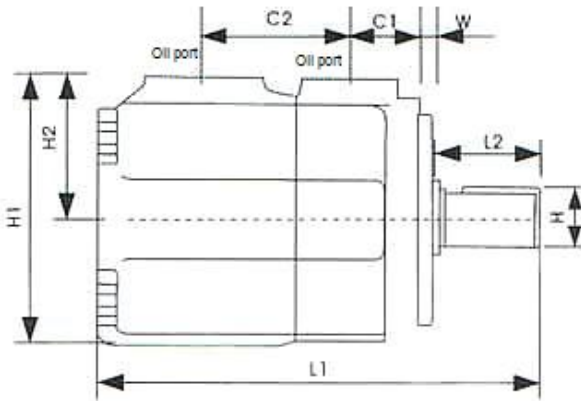
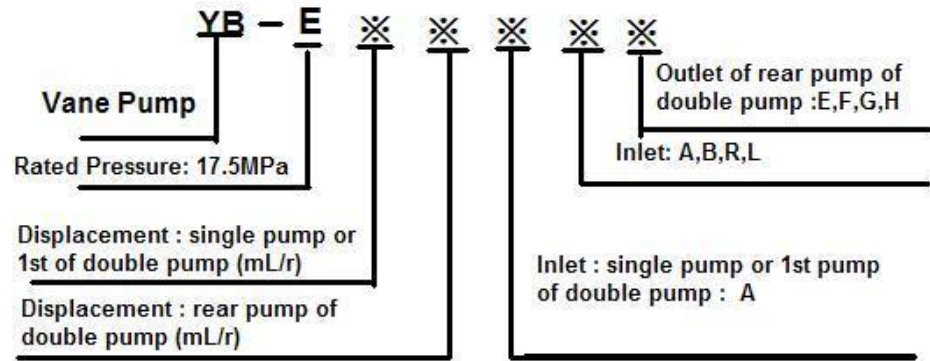
Double Pump



YB-D Series Vane Pump

Model	L	L1	L2	L3	B	E2	H	S	D1(dc)	D2	d(d)	d1	C	t	b	Z1	Z2
YB-D2.5, 4, 6.3, 10	153	80	36	/	36	16	114	90	Φ75	Φ100	Φ15	Φ9	5	17	5	Z3/8"	Z1/4"
YB-D16, 20, 25	186	98	38		45	20	145	110	Φ90	Φ128	Φ20	Φ11		22	5	Z1"	Z3/4"
YB-D32, 40, 50	211	110	45		50	25	170	130	Φ90	Φ150	Φ25	Φ13		28	8	Z1"	Z1"
YB-D63, 80, 100	227	118	49.5		50	30	200	150	Φ90	Φ175	Φ30	Φ13		33	8	Z1 1/4"	Z1"

Model	Disp. m ³ /r	Pressure MPa	Speed r/min	Vol.Eff η _v %	Power kw	Weight kg
YB-D2.5	2.5	10	1000	≥68	0.7	6
YB-D4	4			≥85	0.9	
YB-D6.3	6.3			≥88	1.4	
YB-D10	10			≥88	2.1	
YB-D12.5	12.5			≥88	1.7	9.5
YB-D16	16	10	900	≥88	2.1	
YB-D20	20			≥90	2.5	
YB-D25	25			≥90	3.1	
YB-D32	32			≥90	4.2	16
YB-D40	40			≥92	5.3	
YB-D50	50	10	900	≥92	6.3	
YB-D63	63			≥92	8.2	22
YB-D80	80			≥92	10	
YB-D100	100			≥92	12.4	

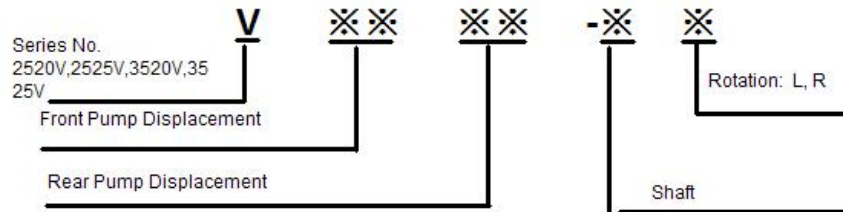




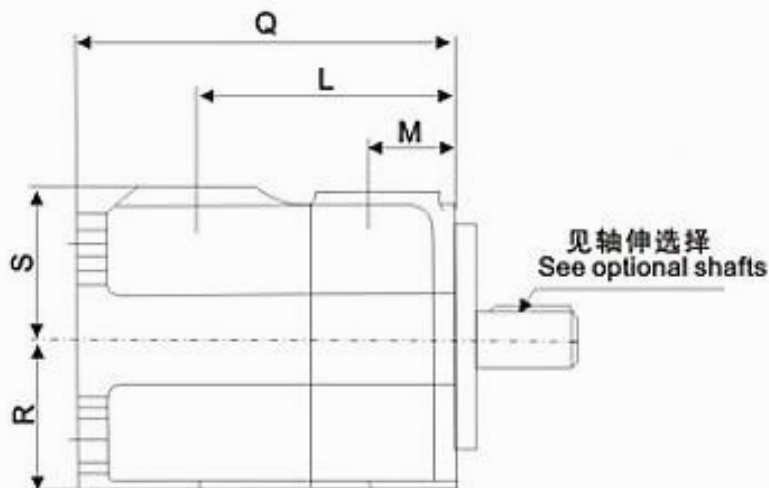
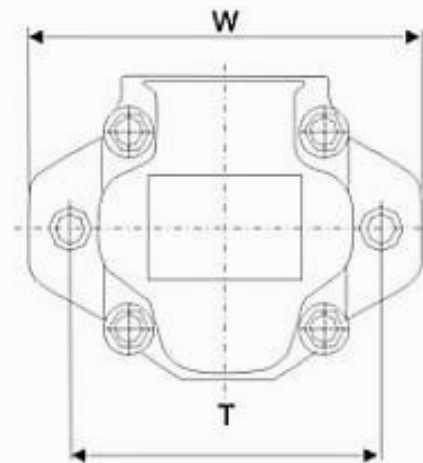
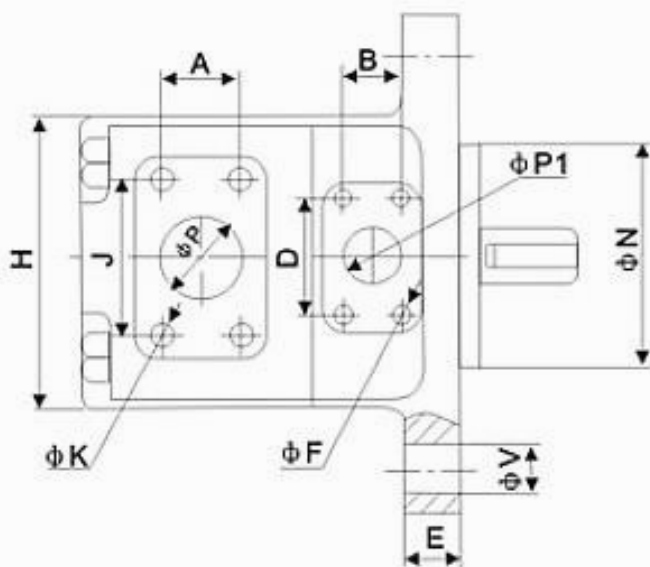
YB-E Series Vane Pump

Series No.	A1	A2	A	B1	B2	b	C1	C2	d1	H	G	d
10V	32	22.2	176	60	47.6	105	32	72	φ14	22.5	6	φ20
20V	35	25	176	70	52	120	38	83	φ14	28	8	φ25
30V	43	32	216	78	60	143	40	85	φ18	35	10	φ32
40V	62	35	216	108	70	150	47	110	φ18	35	10	φ32
Series No.	H1	H2	K	L1	L2	M1	M2	P1	P2	Q	W	D
10V	135	76	140	189	36	M10	M10	φ32	φ19	15	9	φ100
20V	139	76	140	214	42	M12	M10	φ38	φ25	16	9	φ100
30V	157	83	180	254	58	M12	M12	φ50	φ32	19	9	φ125
40V	178	94	180	288	58	M16	M12	φ75	φ38	20	9	φ125

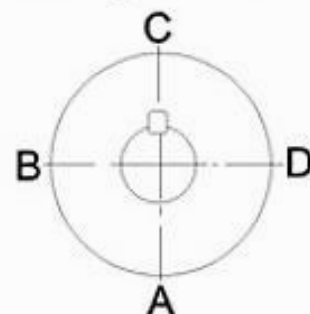
Series No.	Mode	Disp. ml/r	Flow L/min	Speed r/min	Pressure Mpa	Vol.Eff %	Power Kw
10V	YB-E8	8	10	600~1800	16	82	3.6
	YB-E16	17	22				
	YB-E25	24	32				
	YB-E32	32	43				
	YB-E40	42	56				
20V	YB-E50	51	69		90	27	
	YB-E63	63	84				
	YB-E80	81	110				
30V	YB-E100	98	132		90	42.6	
	YB-E125	122	164				
	YB-E160	162	224				
40V	YB-E200	194	267	92	85		
	YB-E220	212	292				
	YB-E250	252	347				
50V	YB-E315	316	435	10	92	86	
	YB-E355	345	474				



V	※※	※※	-※※	※
Series No.	Front Pump Disp.	Rear Pump Disp.	Shaft	Rotation
2520V	10, 12, 14, 17, 19, 21	2, 5, 8, 9, 11, 12, 14	1-Flat key	L-Left R-Right
2525V	10, 12, 14, 17, 19, 21	10, 12, 14, 17, 19, 21		
3520V	21, 25, 30, 35, 38	2, 5, 8, 9, 11, 12, 14		
3525V	21, 25, 30, 35, 38	10, 12, 14, 17, 19, 21		



出油口方向示意
Outlet positions





V Series Vane Pump

Series	Q	L	M	N	R	S	W	T	V	H
20V	156	133	63.5	101.6	55.4	76.2	175	146	14.2	132
25V	162	121	38	101.6	63.5	76.2	175	146	14.2	118
35V	185	125	38	127	69.9	82.6	213	181	17.5	140
Series	A	B	D	P	P1	K	F	E	J	
20V	22.2	35.7	69.9	38.1	19	3/8"- 16UNG- 28*19	1/2"- 13UNC- 28*21	13	47.5	
25V	35.7	26.2	52.4	38.1	25.4	1/2"- 13UNC- 28*22.3	3/8"- 16UNG- 28*19	13	69.9	
35V	42.9	30.2	58.7	50.8	31.8	1/2"13UN F-28.23.8	7/16"- 14UNG- 28*22.3	16	77.8	

Model	Code of Disp.	Disp.ml/r	Max. Pressure Mpa	Max. Speed r/min	Min Speed r/min
20V	2	7	14	1800	600
	5	18	21	1800	600
	8	27	21	1800	600
	9	30	21	1800	600
	11	36	21	1800	600
	12	40	16	1800	600
	14	45	14	1800	600
25V	10	32.5	17.5	1800	600
	12	38.3	17.5	1800	600
	14	43.3	17.5	1800	600
	17	52.5	17.5	1800	600
	19	59	17.5	1800	600
35V	21	65	17.5	1800	600
	21	67	17.5	1800	600
	25	81	17.5	1800	600
	30	95	17.5	1800	600
	35	109	17.5	1800	600
	38	118	17.5	1800	600



VP-12-F-A1

pressure range

mounting type

L:

F:

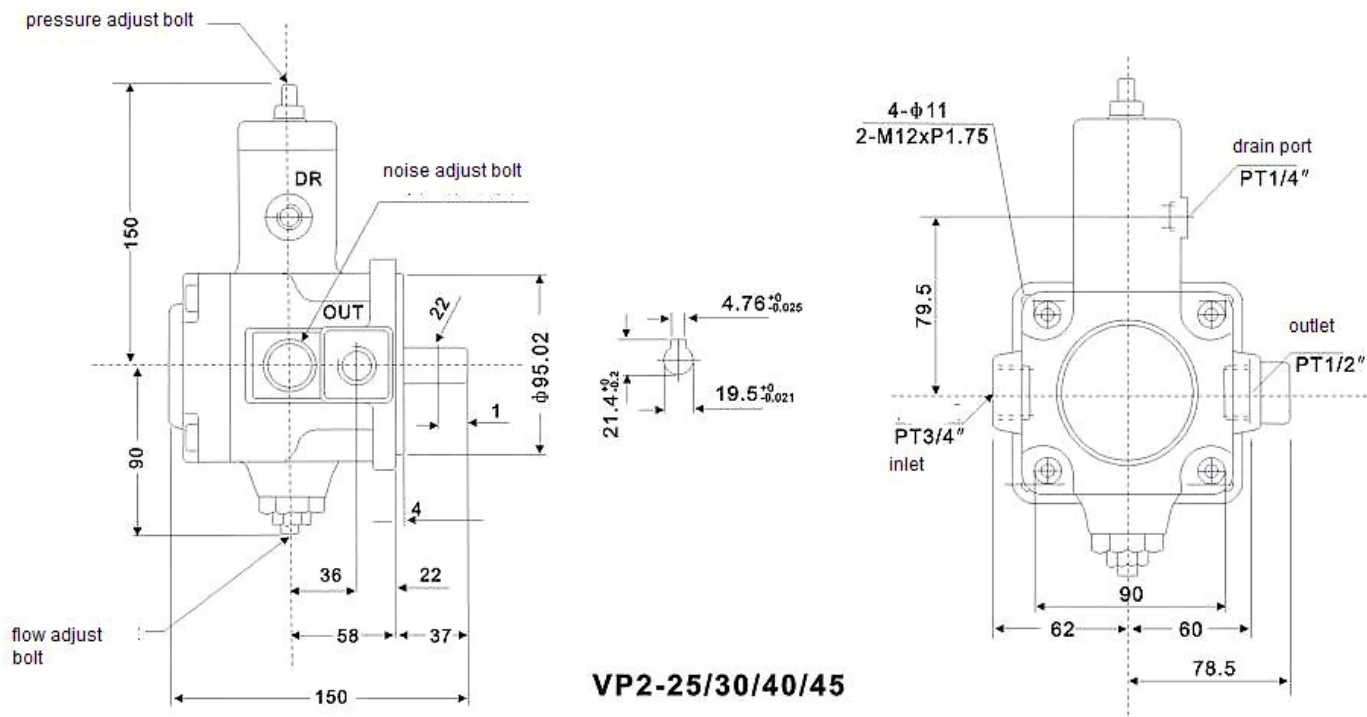
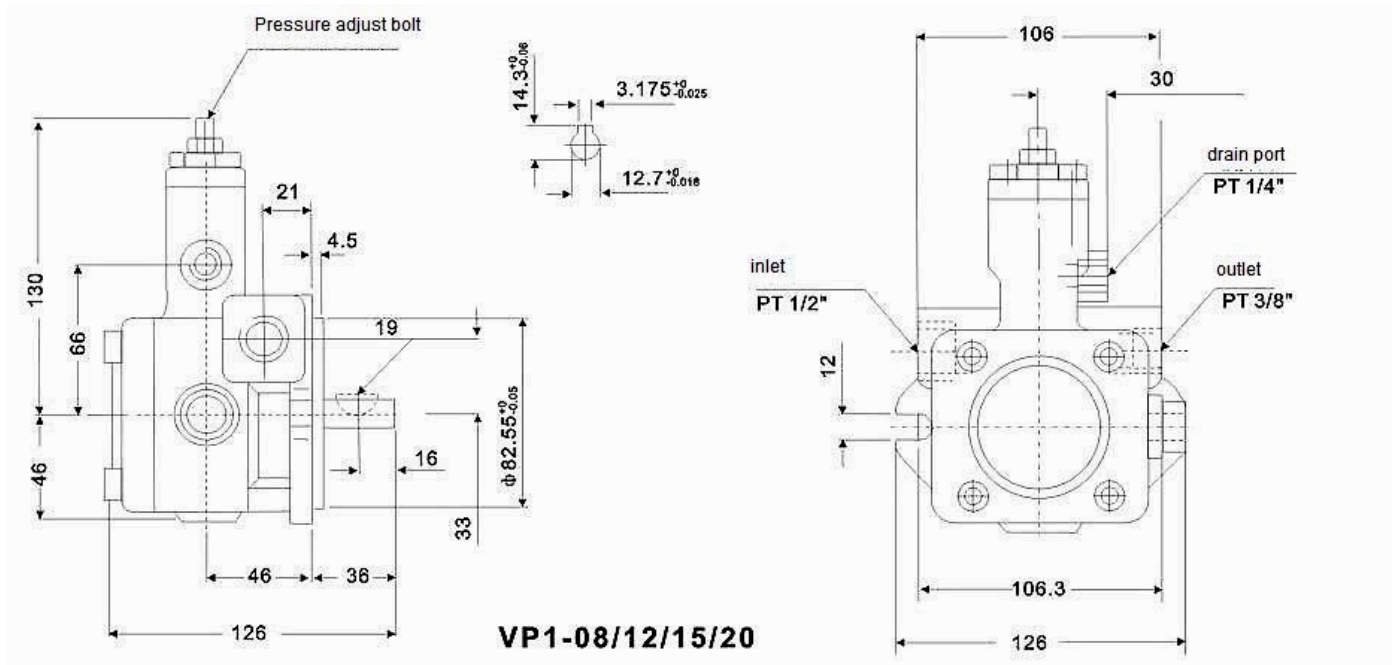
displacement

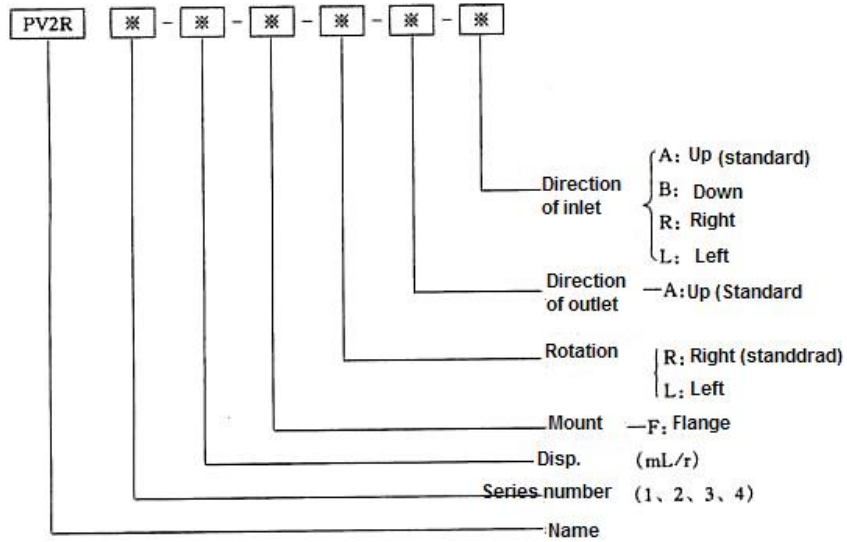
low pressure variable
vane pump

Model	Max pressure Mpa	Disp. ml/r	Disp. Without load L/min		Pressure range Mpa	Speed r/min	
			1500rpm	1800rpm		Max	Min
VP1-08F-A*	7	4.4	6.7	8	A1: 0.8-2 A2: 1.5-5 A3: 3-7	1800	800
VP1-12F-A*		6.7	10	12			
VP1-15F-A*		8.3	12.5	15			
VP1-20F-A*		11.1	16.7	20			
VP2-25F-A*		13.9	20.8	25			
VP2-30F-A*		16.7	25	30			
VP2-40F-A*		22.2	33.3	40			
VP2-45F-A*		25	37.5	45			
VP3-20F-A*	14	11.1	16.7	20	A1: 1.5-3.5 A2: 2.2-7 A3: 5-10.5 A4: 7-14	1800	800
VP3-30F-A*		16.7	25	30			
VP3-40F-A*		22.2	33.3	40			
VP3-54F-A*		30	45	54			
VP3-70F-A*		38.9	58.3	70			
VP3-86F-A*		47.8	71.7	86			

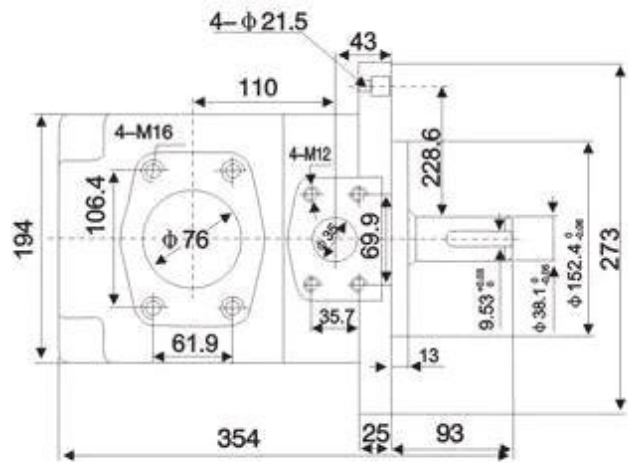
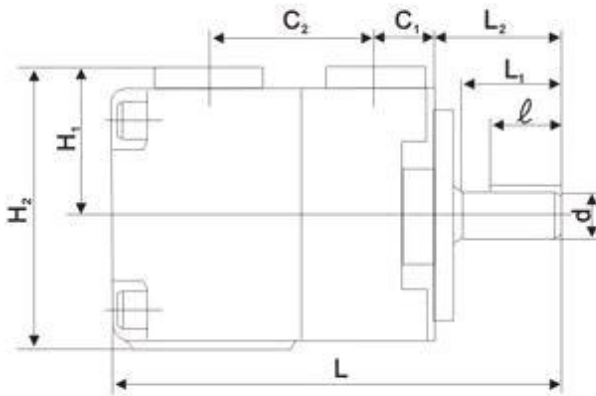
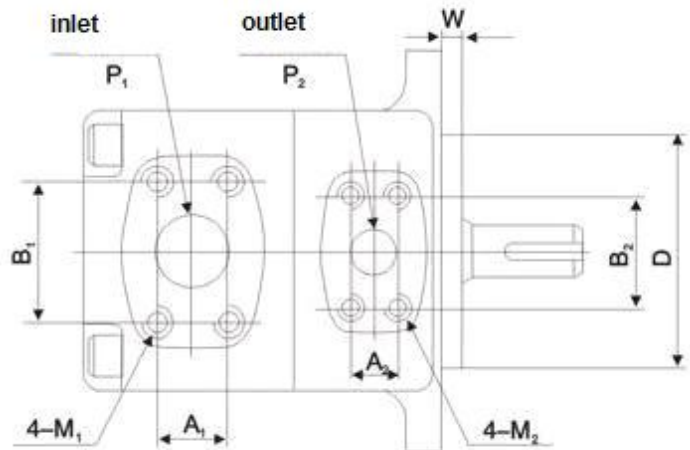
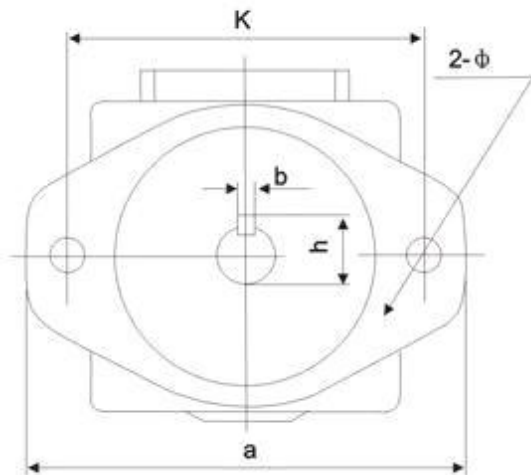


VP Series Vane Pump





Single pump



PV2R4



PV2R Series Vane Pump

Model	A1	A2	B1	B2	M1	M2	P1	P2	D	Φ	d	b
PV2R1	26.2	17.5	52.4	38.1	10	8	Φ26	Φ13	Φ82.55	11	Φ15.88	3.97
PV2R2	30.2	22.2	58.7	47.6	10	10	Φ32	Φ19	Φ101.6	13.5	Φ22.23	6.35
PV2R3	42.9	30.2	77.8	58.7	12	10	Φ51	Φ28	Φ127	17.5	Φ31.75	7.94
PV2R4	61.9	35.7	106.4	69.9	16	12	Φ76	Φ36	Φ152.4	21.5	Φ38.1	9.53
Model	h	e	L	L1	L2	C1	C2	H1	H2	K	a	W
PV2R1	17.68	25	184	41	50	25	56	60	114	106	130	7
PV2R2	25.01	32	212	47	59	28	80	70	135	146	174	9
PV2R3	35.32	40	259	63	75	37	90	90	170	181	213	9
PV2R4	42.36	56	354	76	92	43	110	115	217	228.6	273	13

Model	Disp. ml/r	Max. Pressure Mpa				Speed r/min	Power KW
		Antiwear Hydraulic Oil	Normal Hydraulic Oil	Phosphoester Hydraulic Oil	Anti wear Water Glycol		
PV2R1-6	6	17.5	16	16	600~1800	3.3/4.4	
PV2R1-8	8					4.0/5.4	
PV2R1-10	10					4.3/5.9	
PV2R1-12	12					5.1/7.0	
PV2R1-14	14					5.4/7.5	
PV2R1-17	17					6.2/8.8	
PV2R1-19	19					6.8/9.7	
PV2R1-23	23					8.0/11.4	
PV2R1-25	25					11.5	
PV2R1-28	28					12.6	
PV2R1-31	31	16				14.5	
PV2R2-26	26	17.5	14	14	600~1800	10.7/14.7	
PV2R2-33	33					12.2/17.5	
PV2R2-41	41					14.5/20.6	
PV2R2-47	47					15.9/22.7	
PV2R2-53	53					20.1/28.4	
PV2R2-59	59					11.5	
PV2R2-65	65					12.6	
PV2R2-75	75					14.5	
PV2R3-52	52					20.1/28.4	
PV2R3-60	60					21.7/30.5	
PV2R3-66	66	24.6/34.2					
PV2R3-76	76	27.3/38.1					
PV2R3-85	85	28/42					
PV2R3-94	94	31.5/45					
PV2R3-116	116	38.0/53.9					
PV2R3-125	125	40.1/55.9					
PV2R3-136	136	44.4/64.8					
PV2R3-153	153	49.0/70.5					
PV2R4-136	136	44.4/64.8					
PV2R4-153	153	49.0/70.5					
PV2R4-184	184	59.1/86.4					
PV2R4-200	200	63.7/93.0					
PV2R4-237	237	72.8/107					



Introduction

SHANGHAI XIAOLI HYDRAULICS CO.,LTD is the qualified company who is a professional R & D and design for various hydraulic system units and related equipments. We mainly manufacture hydraulic pumps for various machinery equipments and auxiliary devices for motors, also including hydraulic control valve series for transmission systems. In addition to Standard types, we also can design and make products according to customers' requirements. Our corporation has established branches in Jiangsu Province, Shandong Province, Hebei Province, Anhui Province and Heilongjiang provinces, based on this sales network, our products are widely sold in domestic and exported to overseas markets.

We have various hydraulic pumps & gear motors ranging from 0.01 MPa to 63 MPa for different pressure requirements, we also can produce double or triple pumps according to customers' requirement, and supply pump matching with motor. We have hydraulic control valves with three categories of pressure, direction and flow with high-to-low pressure, which are widely used in different machineries, machine tools and engineering equipments. Besides XiaoLi its own brand's products, we have kept spread strategic relationships with various professional manufacturers from domestic and abroad, taking as the role of distributor, to meet your different requirements.

XiaoLi its own advantages compared with rivals

***Quality Control and large business scale with competitive prices & discounts, to help customers reduce costs while making improvement on facilities.

***Supplying from stock, sales and distribution integrated, let our customers enjoy one-stop service

***Optimizing sourcing and supplying in order to meet different customers' requirements in different fields, we can provide our products with best prices



Contact Details

Shanghai XiaoLi Hydraulics Co.,Ltd

Add : No. 4719 ,Gonghexing Rd, Shanghai ,China.

Tel : +86 21 -66981073 Fax : +86 21 -66981550

Email: gearpump@shxlyy.com (International Market)

bill@shxlyy.com (Chinese Domestic Market)

URL: www.shxlyy.com