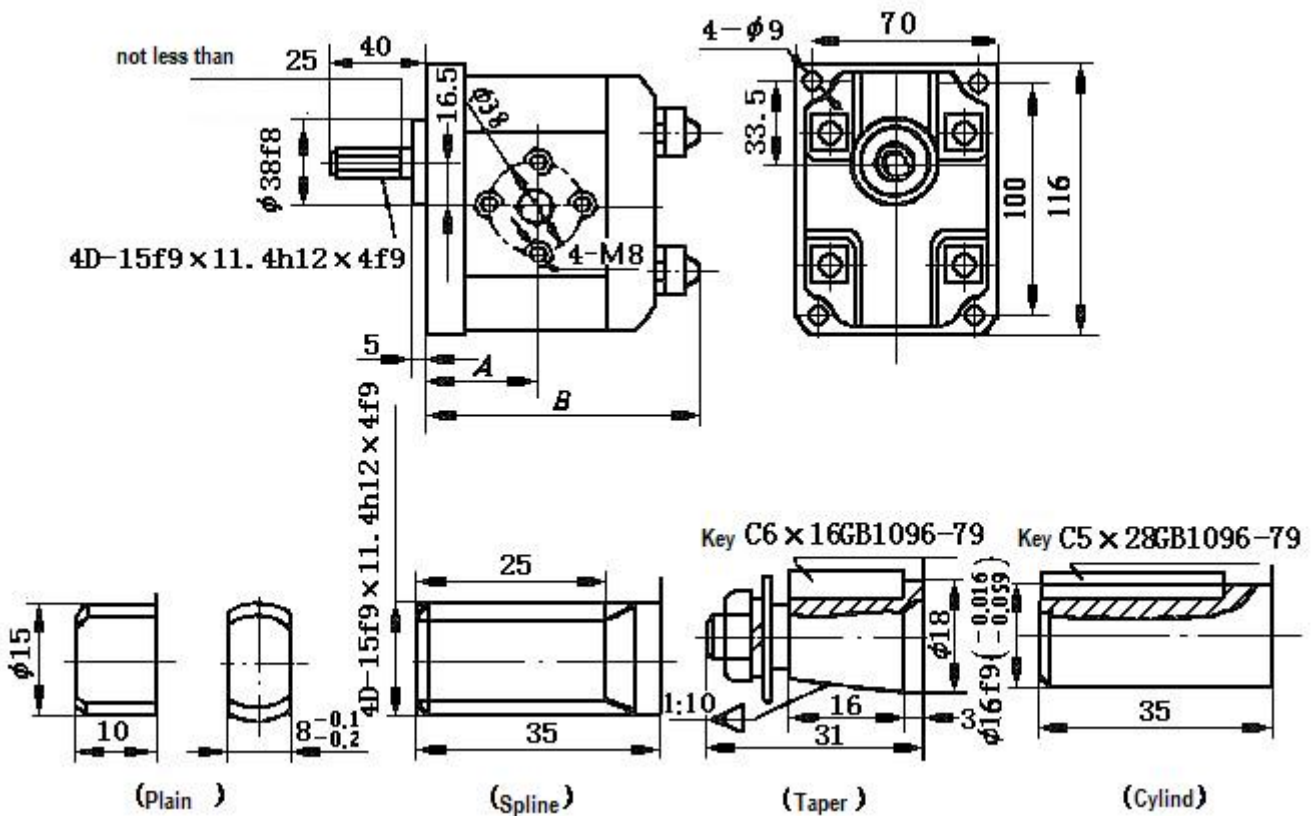




CB T - F 3 ** F * *

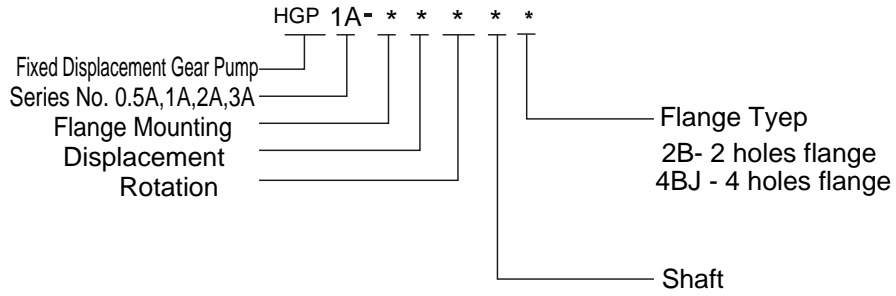
Gear Pump
 Structure code
 Pressure Grade: 20MPa
 Gear Module: m=3
 Nominal Discharge ml/r:
 6,8,10,12,14,16,20,25

Turn Direction:
 None-Turn to right L-Turn to Left
 Shaft extension type:
 "P": Flat key cylinder shaft extension
 "B": Flat mouth shaft extension
 "H": Rectangle spline shaft extension
 "J": Involute spline shaft extension
 "S": Flat key circular cone shaft extension
 Oil In/outlet Flange Connection

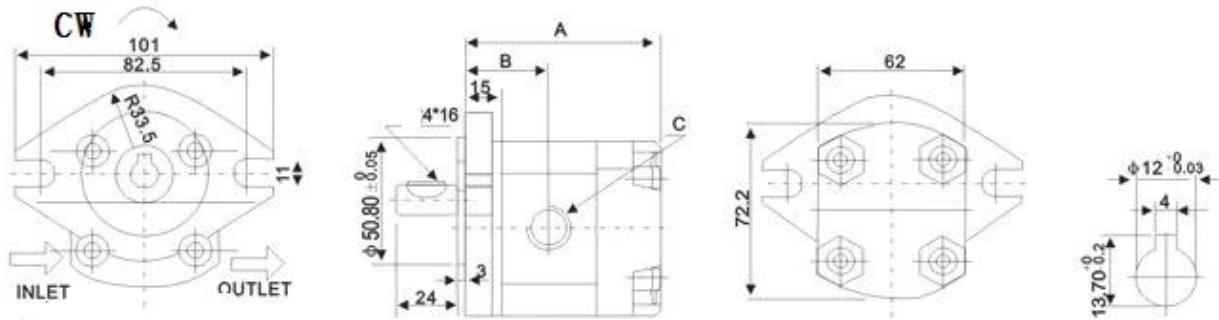


Model	Disp.(Ml/r)	Pressure(MPa)		Speed (r/min)			A(mm)	B(mm)
		Rated	Max.	Rated	Max.	Min.		
CBT-F306	6	20	25	2000	3000	600	47	103
CBT-F308	8	20	25	2000	3000	600	49	106.5
CBT-F310	10	20	25	2000	3000	600	50	109
CBT-F312	12	20	25	2000	3000	600	52	113
CBT-F314	14	20	25	2000	3000	600	53	115
CBT-F316	16	20	25	2000	3000	600	54.5	118
CBT-F320	20	20	25	2000	3000	600	58	125
CBT-F325	25	20	25	2000	3000	600	62	133

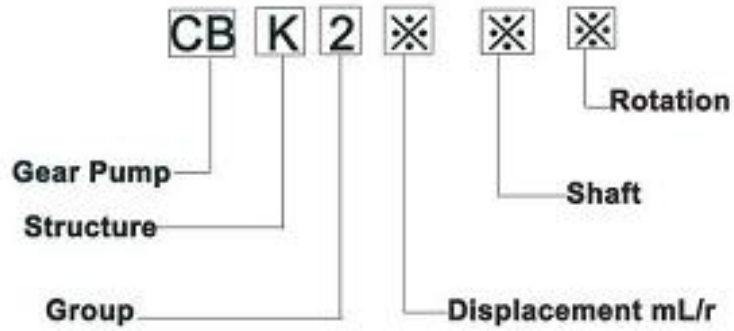
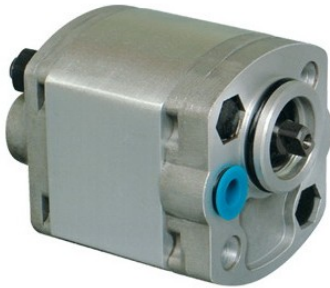
Notes: Indicated cast iron cover or AL alloy cover



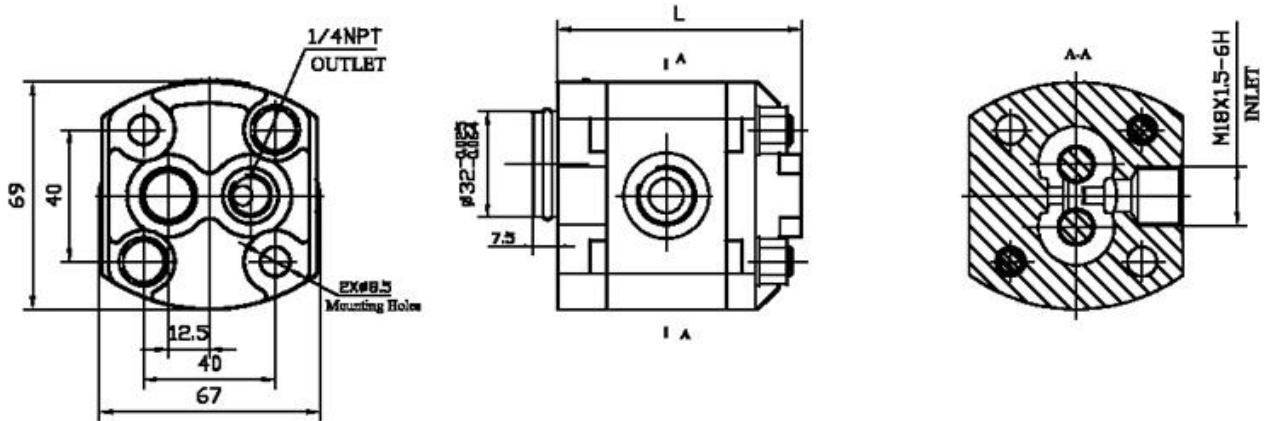
HGP-1A Gear Pump Series



Model	Disp.(Ml/r)	Pressure(MPa)		Speed (r/min)			Inlet	Outlet
		Rated	Max.	Rated	Max.	Min.		
HGP-1	1				4500	1000		
HGP-2	2				4000			
HGP-3	3							
HGP-4	4	21	25	1800			PT3/4	PT3/4
HGP-5	5				3000			
HGP-6	6					700		
HGP-8	8.4							



■ "CB" Side Inlet Back Outlet

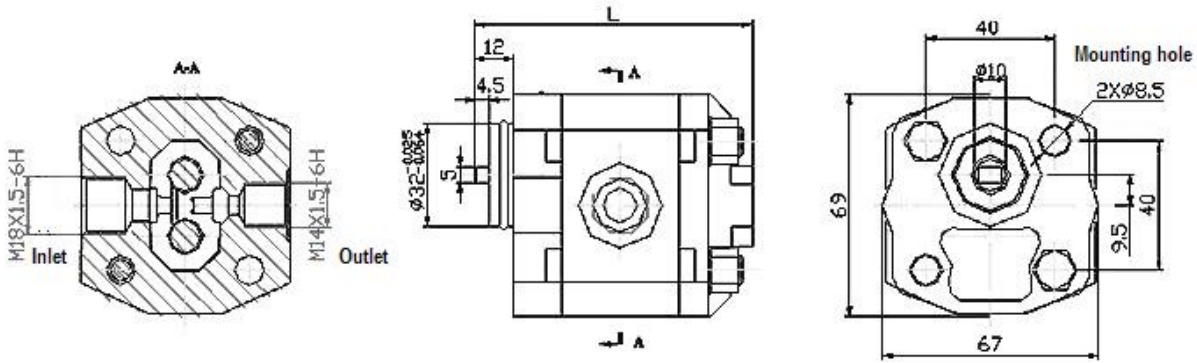


Model	Disp.(Ml/r)	Pressure(MPa)		Speed (r/min)			L(mm)	Vol.Efficiency >%
		Rated	Max.	Rated	Max.	Min.		
CBK-F201.1	1.1	20	20				74	
CBK-F201.3	1.3	20	20				75	
CBK-F201.6	1.6	20	20				76	
CBK-F201.8	1.8	20	20				77	
CBK-F202.1	2.1	20	20	2500	3500	600	78	90
CBK-F202.7	2.7	20	20				80	
CBK-F203.2	3.2	20	20				82	
CBK-F203.7	3.7	20	20				84	
CBK-F204.2	4.2	20	20				86	
CBK-F204.8	4.8	16	16				88	
CBK-F205.8	5.8	16	16				92	

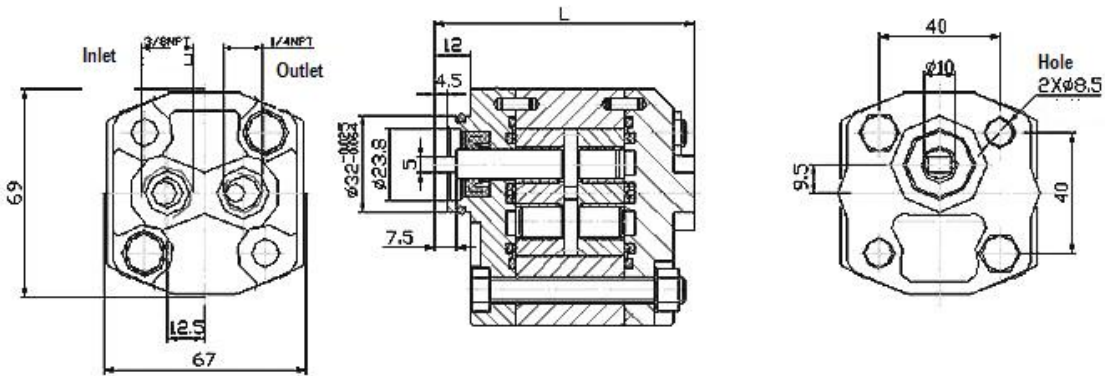


CBK2 Series

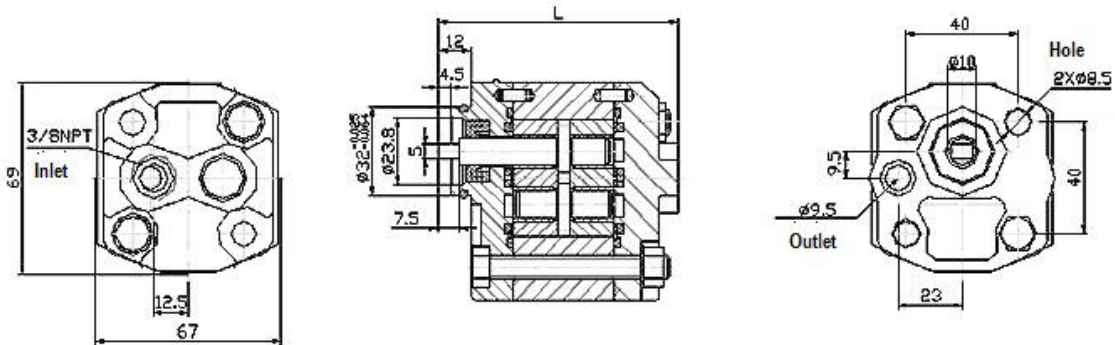
■ "CC" Side Inlet Side Outlet



■ "BB" Back Inlet Back Outlet



■ "BA" Back Inlet Front Outlet

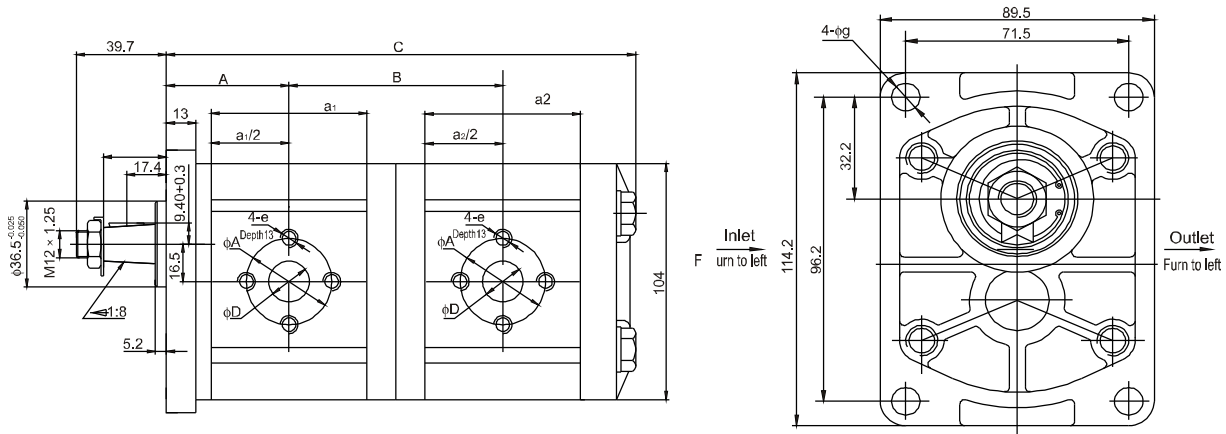




CB T - F 3 ** / 3 F1 Z1 ***
 ① ② ③ ④ ⑤ ⑥ ⑦ ⑧ ⑨

- ① Gear Pump
- ② Structure Code
- ③ Pressure Grade: 20 Mpa
- ④ Gear Module: $m=3$
- ⑤ Front Pump Nominal Discharge ml/r: 4, 6, 8, 12, 14, 16, 20, 25
- ⑥ Back Pump Nominal Discharge ml/r: 4, 6, 8, 12, 14, 16, 20, 25
- ⑦ Oil In/outlet Flange connection
- ⑧ Taper Shaft type
- ⑨ Turn Direction Omit-Turn to right L-Turn to left

■ CBT-F3** / ** 安装尺寸 Installation



Discharge ml/r	A1, a2 Size	Inlet			Outlet		
		φD	φA	φe	φD	φA	φe
4	52	13	30	M6	13	30	M6
6	54	13	30	M6	13	30	M6
8	57.5	13	30	M6	13	30	M6
10	60	20	40	M8	13	30	M6
12	64	20	40	M8	13	30	M6
14	66	20	40	M8	13	30	M6
16	70	20	40	M8	13	30	M6
20	76	20	40	M8	13	30	M6
25	84	22	40	M8	13	30	M6

Model	Size A	Size B	Size C
CBT-F3**/3**F1Z1*	$19+a1/2$	$26+a1/2+a2/2$	$68.5+a1+a2$



Introduction

SHANGHAI XIAOLI HYDRAULICS CO.,LTD is the qualified company who is a professional R & D and design for various hydraulic system units and related equipments. We mainly manufacture hydraulic pumps for various machinery equipments and auxiliary devices for motors, also including hydraulic control valve series for transmission systems. In addition to Standard types, we also can design and make products according to customers' requirements. Our corporation has established branches in Jiangsu Province, Shandong Province, Hebei Province, Anhui Province and Heilongjiang provinces, based on this sales network, our products are widely sold in domestic and exported to overseas markets.

We have various hydraulic pumps & gear motors ranging from 0.01 MPa to 63 MPa for different pressure requirements, we also can produce double or triple pumps according to customers' requirement, and supply pump matching with motor. We have hydraulic control valves with three categories of pressure, direction and flow with high-to-low pressure, which are widely used in different machineries, machine tools and engineering equipments. Besides XiaoLi its own brand's products, we have kept spread strategic relationships with various professional manufacturers from domestic and abroad, taking as the role of distributor, to meet your different requirements.

XiaoLi its own advantages compared with rivals

***Quality Control and large business scale with competitive prices & discounts, to help customers reduce costs while making improvement on facilities.

***Supplying from stock, sales and distribution integrated, let our customers enjoy one-stop service

***Optimizing sourcing and supplying in order to meet different customers' requirements in different fields, we can provide out products with best prices

Shanghai XiaoLi Hydraulics Co.,Ltd

Add : No. 4719 ,Gonghexing Rd, Shanghai ,China. Tel : +86 21 -66981073 Fax : +86 21 -66981550
Email: gearpump@shxlyy.com (International Market) bill@shxlyy.com (Chinese Domestic Market)
URL: www.shxlyy.com